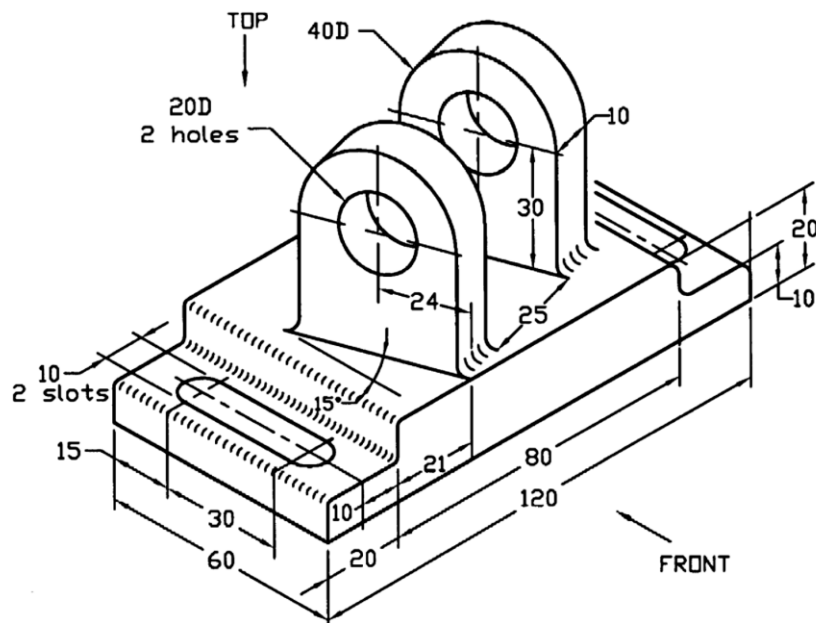




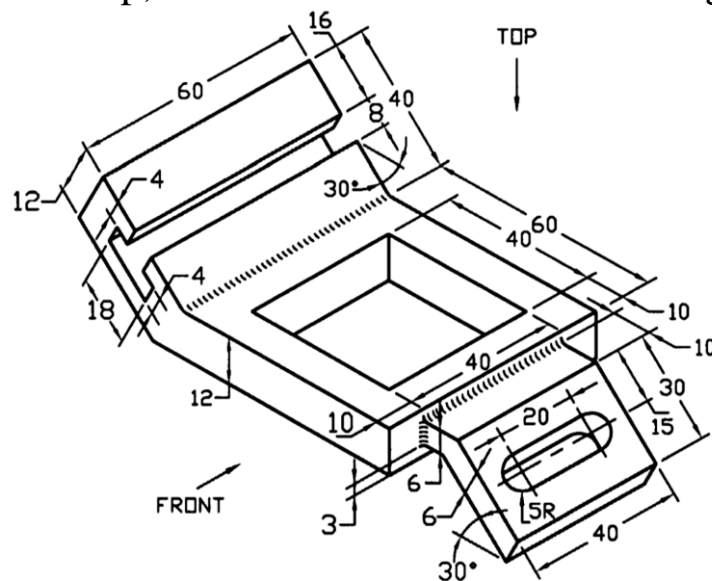
Bangladesh University of Engineering and Technology
Department of Mechanical Engineering

Assignment-1
ME 260 – SOLIDWORKS

- ♣ **Draw the isometric view of the pin support as shown below.**
Put the top, front and LS View on a drawing sheet.



- ♣ **Draw the isometric view of the guide bracket as shown below.**
Put the top, front and RS View on a drawing sheet.



- ♣ Draw the isometric view of the switch plate as shown below.
Put the top, front and RS View on a drawing sheet.

